



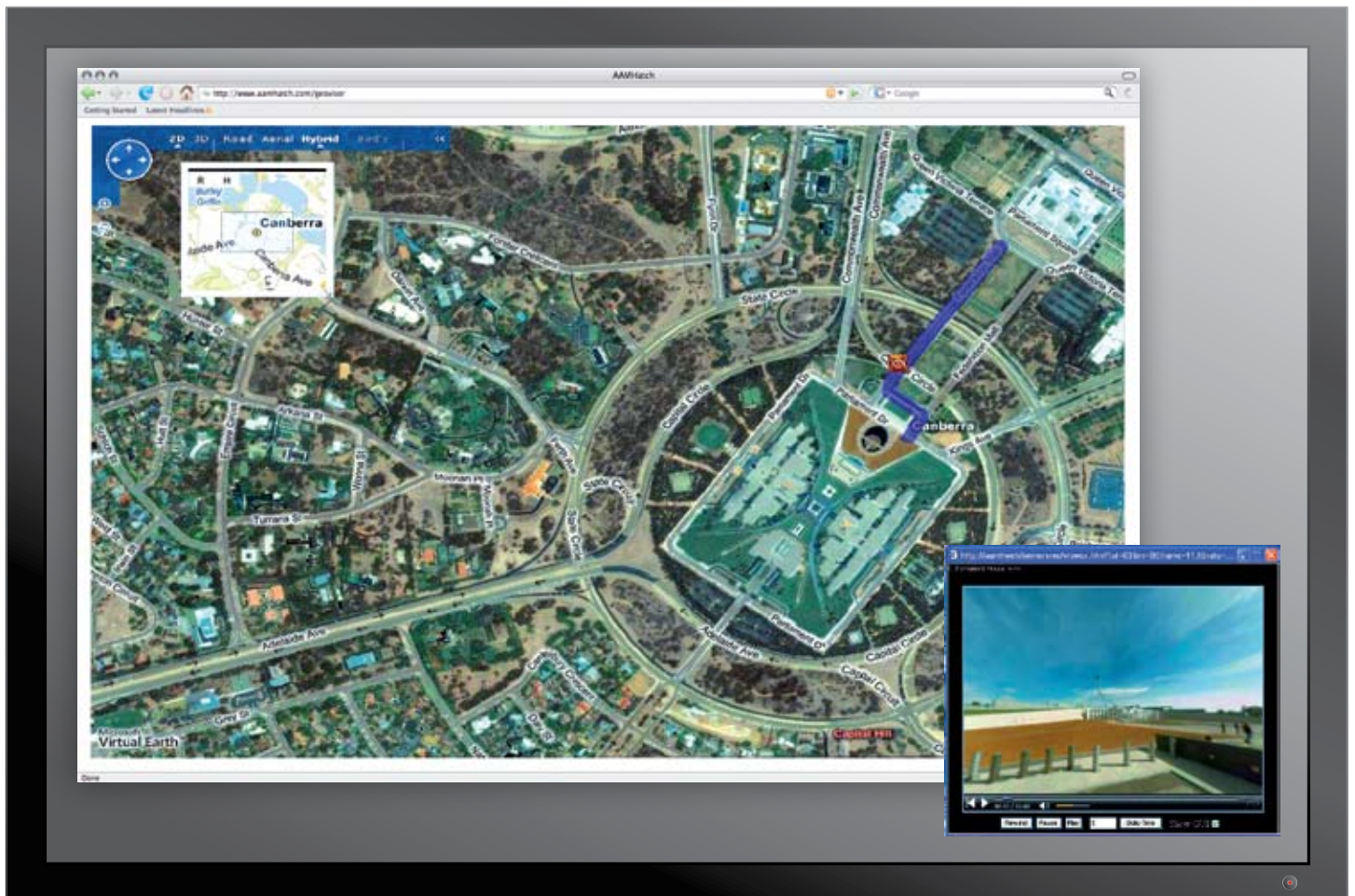
[www.aoc.co.za/360](http://www.aoc.co.za/360) | [info@aoc.co.za](mailto:info@aoc.co.za)

## Digital Mashups

GeoVisor is a leading data integration system that is completely independent of base map platforms.

Below is a GeoVisor mashup of Parliament House, Canberra, Australia. In this case, a Microsoft Virtual Earth™ platform has been integrated using GeoVisor with 360° video captured from the same location.

GeoVisor enables users to instantly retrieve footage and geospatial information for any item of interest. Each frame captured by 360° Video is georeferenced and time stamped. Co-ordinates are available for every single frame within the spherical video. The resulting selected location can then be viewed in any direction desired, with full pan, zoom and screen capture functionality.



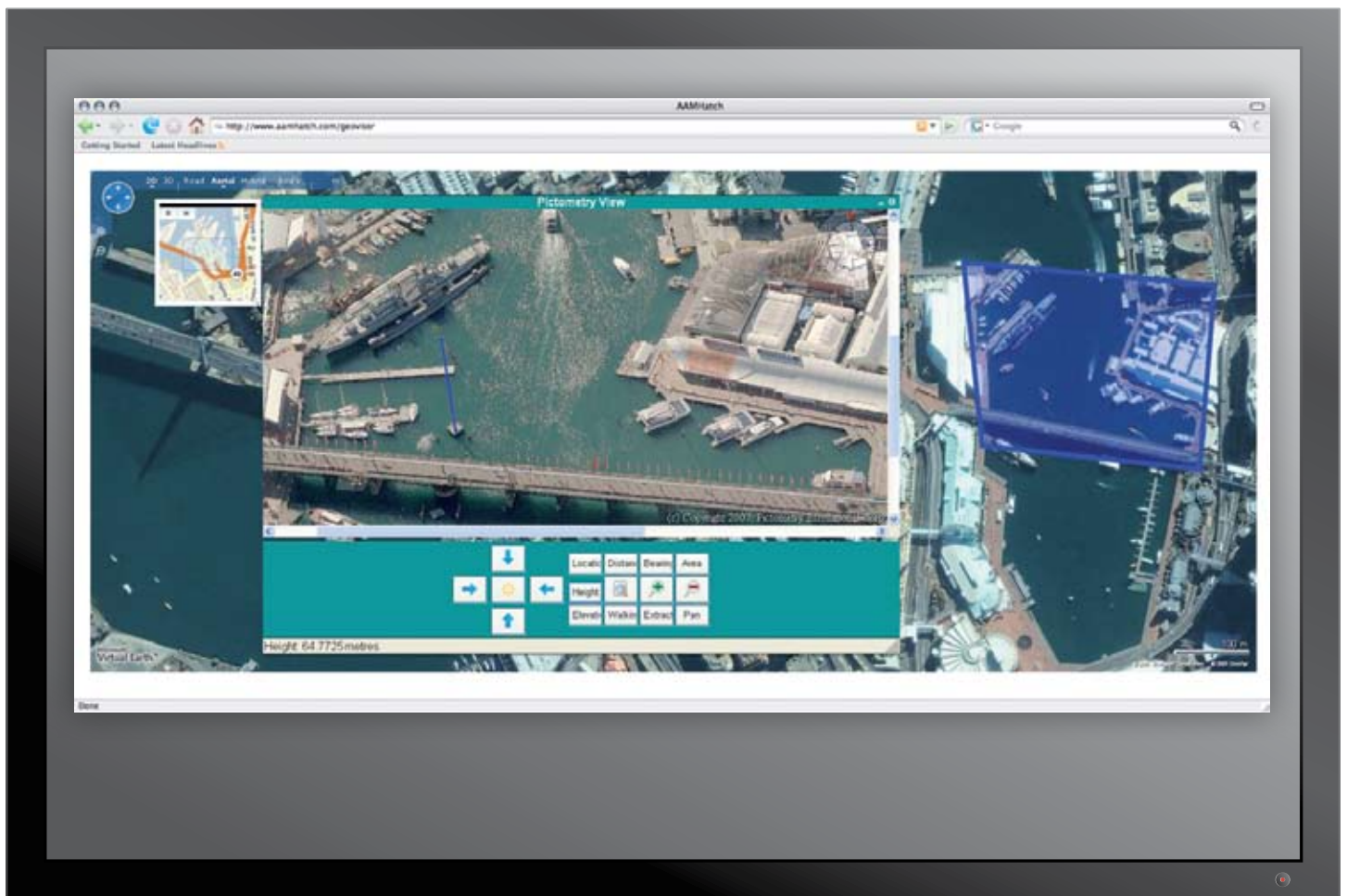
GeoVisor is AOC's user interface for image integration. Shown below is the synchronized display of Microsoft's Virtual Earth™ and multi-view oblique photographs of the Sydney Convention and Exhibition Centre, Australia.

GeoVisor's Location Finder makes navigating to an area of interest easy. GeoVisor provides a geocoded framework for the coordinated display of the street map and visualisation content from Pictometry® as well as 360° Video.

GeoVisor's simple box selection of an area of interest on the map enables users to find and display multiple pictures

from different perspectives. Through unique mathematic modeling processes imbedded in Pictometry, viewers are able to accurately measure height, area, distance and elevation of any feature in the oblique image.

The blue vertical line on the image (below) shows a simple height measurement of a pontoon feature in Darling Harbour. By referring to the status bar at the bottom of the frame; heights, areas and distances can be quickly and accurately determined.



## Integrate, Navigate, Locate: **GeoVisor**